

## Cabinet U-Handles

### Aluminum

#### SPECIFICATION

##### Aluminum AL

- Powder coated, textured finish
  - Black, RAL 9005, UV-resistant **SW**
  - Silver, RAL 9006 **SR**
- Powder coated, antimicrobial
  - White, RAL 9016 **WSA**
  - Black, RAL 9005 **SMA**
- Plain finish, tumbled **BL**

#### INFORMATION

Cabinet U-handles GN 426 are manufactured from a bent aluminum profile and have excellent stability and ergonomic design. In addition to the standard surfaces, these cabinet U-handles are also available with a functional coating.

The **SMA / WSA** versions have a powder coating based on silver ions, which gives them antimicrobial properties. The principle of action has been shown to reduce the contamination of the handle surfaces within 24 hours so that fewer than 1% of bacteria and fewer than 5% of viruses ultimately survive.

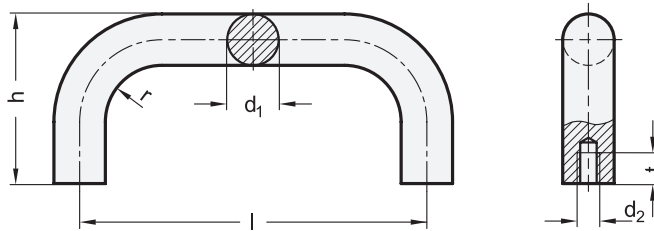
Standard parts with antimicrobial plastic coating are primarily used in the health care sector and in public buildings, such as airports, train stations, stadiums, etc.

#### ACCESSORY

- GN 181 Fastening Sets (Mounting from the Operator's Side) (see page 488)

#### TECHNICAL INFORMATION

- Load Rating Information (see page A35)



\* Complete with

<b>SW</b> RAL 9005	<b>SR</b> RAL 9006	<b>SMA</b> RAL 9005, antimicrobial	<b>WSA</b> RAL 9016, antimicrobial	<b>BL</b> Plain, tumbled
-----------------------	-----------------------	---------------------------------------	---------------------------------------	-----------------------------

#### GN 426

Description	d <sub>1</sub>	Length l	d <sub>2</sub>	h	r	t min.	⚖️
GN 426-AL-20-200-*	20	200	M 8	68	22	15	236
GN 426-AL-20-250-*	20	250	M 8	68	22	15	285
GN 426-AL-20-300-*	20	300	M 8	68	22	15	330
GN 426-AL-20-350-*	20	350**	M 8	68	22	15	375
GN 426-AL-28-250-*	28	250	M 10	78	32	15	550
GN 426-AL-28-300-*	28	300	M 10	78	32	15	332
GN 426-AL-28-350-*	28	350**	M 10	78	32	15	719
GN 426-AL-28-400-*	28	400	M 10	78	32	15	776

Weight SW

\*\* Not available for WSA, SMA